

**BUB1B Antibody**  
**Purified Rabbit Polyclonal Antibody (Pab)**  
**Catalog # AP50052****Specification**

---

**BUB1B Antibody - Product Information**

Application	WB
Primary Accession	<a href="#">O60566</a>
Reactivity	Human, Mouse
Host	Rabbit
Clonality	Polyclonal
Calculated MW	120, 106, 121 KDa
Antigen Region	361-389

**BUB1B Antibody - Additional Information****Gene ID** 701**Other Names**

Mitotic checkpoint serine/threonine-protein kinase BUB1 beta, MAD3/BUB1-related protein kinase, hBUBR1, Mitotic checkpoint kinase MAD3L, Protein SSK1, BUB1B, BUBR1, MAD3L, SSK1

**Dilution**

WB~~ 1:1000

**Format**

Rabbit IgG in phosphate buffered saline (without Mg<sup>2+</sup> and Ca<sup>2+</sup>), pH 7.4, 150mM NaCl, 0.09% (W/V) sodium azide and 50% glycerol.

**Storage Conditions**

-20°C

**BUB1B Antibody - Protein Information****Name** BUB1B**Synonyms** BUBR1, MAD3L, SSK1**Function**

Essential component of the mitotic checkpoint. Required for normal mitosis progression. The mitotic checkpoint delays anaphase until all chromosomes are properly attached to the mitotic spindle. One of its checkpoint functions is to inhibit the activity of the anaphase-promoting complex/cyclosome (APC/C) by blocking the binding of CDC20 to APC/C, independently of its kinase activity. The other is to monitor kinetochore activities that depend on the kinetochore motor CENPE. Required for kinetochore localization of CENPE. Negatively regulates PLK1 activity in interphase cells and suppresses centrosome amplification. Also implicated in triggering apoptosis in polyploid cells that exit aberrantly from mitotic arrest. May play a role for tumor suppression.

**Cellular Location**

Cytoplasm. Nucleus. Chromosome, centromere, kinetochore. Cytoplasm, cytoskeleton, microtubule organizing center, centrosome. Note=Cytoplasmic in interphase cells. Associates with the kinetochores in early prophase. Kinetochore localization requires BUB1, PLK1 and KNL1

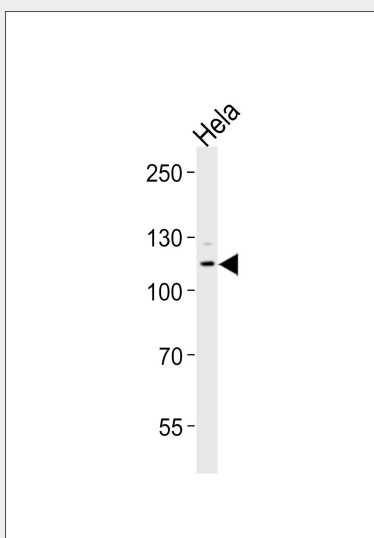
**Tissue Location**

Highly expressed in thymus followed by spleen. Preferentially expressed in tissues with a high mitotic index

**BUB1B Antibody - Protocols**

Provided below are standard protocols that you may find useful for product applications.

- [Western Blot](#)
- [Blocking Peptides](#)
- [Dot Blot](#)
- [Immunohistochemistry](#)
- [Immunofluorescence](#)
- [Immunoprecipitation](#)
- [Flow Cytometry](#)
- [Cell Culture](#)

**BUB1B Antibody - Images**

Western blot analysis of lysates from HeLa cell line, using BUB1B Antibody (C10142). C10142 was diluted at 1:1000. A goat anti-rabbit IgG H&L (HRP) at 1:5000 dilution was used as the secondary antibody. Lysates at 35 µg.

**BUB1B Antibody - Background**

Essential component of the mitotic checkpoint. Required for normal mitosis progression. The mitotic checkpoint delays anaphase until all chromosomes are properly attached to the mitotic spindle. One of its checkpoint functions is to inhibit the activity of the anaphase-promoting complex/cyclosome (APC/C) by blocking the binding of CDC20 to APC/C, independently of its kinase activity. The other is to monitor kinetochore activities that depend on the kinetochore motor CENPE. Required for kinetochore localization of CENPE. Negatively regulates PLK1 activity in interphase cells and suppresses centrosome amplification. Also implicated in triggering apoptosis in polyploid

cells that exit aberrantly from mitotic arrest. May play a role for tumor suppression.

#### **BUB1B Antibody - References**

Donadelli R.,et al.Biochem. Biophys. Res. Commun. 246:881-887(1998).  
Taylor S.S.,et al.J. Cell Biol. 142:1-11(1998).  
Chan G.K.T.,et al.J. Cell Biol. 143:49-63(1998).  
Cahill D.P.,et al.Nature 392:300-303(1998).  
Davenport J.W.,et al.Genomics 55:113-117(1999).